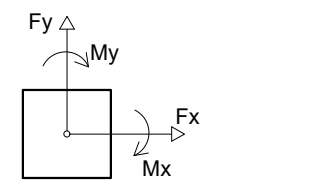


Pilar				Fundação				Bloco			
Nome	Seção	X (cm)	Y (cm)	Carga Max. (t)	Lado B (cm)	Lado H (cm)	h1 / h2 (cm)	ne	Estaca	ca (cm)	Base sub. (cm)
P1	25x40	2.50	2065.00	5.3	2.1	132	57	0	50	2	C25 -30
P2	25x40	163.75	2065.00	6.2	5.8	57	57	0	45	1	C25 -30
P3	25x40	317.50	2065.00	6.2	5.8	57	57	0	45	1	C25 -30
P4	25x40	476.25	2065.00	6.3	5.6	57	57	0	45	1	C25 -30
P5	30x40	635.00	2065.00	6.6	6.3	132	57	0	45	2	C25 -30
P6	25x40	793.75	2065.00	6.3	5.6	57	57	0	45	1	C25 -30
P7	25x40	952.50	2065.00	6.4	6.0	57	57	0	45	1	C25 -30
P8	25x40	1106.25	2065.00	5.6	4.0	57	57	0	45	1	C25 -30
P9	30x40	1250.00	2065.00	12.2	4.9	132	57	0	45	2	C25 -30
P10	25x40	1250.00	1921.32	5.8	4.0	57	57	0	45	1	C25 -30
P11	25x40	1250.00	1787.14	5.3	4.7	57	57	0	45	1	C25 -30
P12	25x40	1250.00	1638.21	5.2	4.9	57	57	0	45	1	C25 -30
P13	25x40	1250.00	1489.29	5.2	4.8	57	57	0	45	1	C25 -30
P14	25x40	1250.00	1340.36	5.1	4.6	57	57	0	45	1	C25 -30
P15	30x40	1250.00	1191.43	7.3	5.5	132	57	0	45	2	C25 -30
P16	25x40	1250.00	1042.50	4.2	3.5	57	57	0	45	1	C25 -30
P17	25x40	1250.00	893.57	3.9	3.7	57	57	0	45	1	C25 -30
P18	25x40	1250.00	744.64	3.9	3.7	57	57	0	45	1	C25 -30
P19	25x40	1250.00	595.71	3.9	3.7	57	57	0	45	1	C25 -30
P20	25x40	1250.00	446.79	4.4	4.1	57	57	0	45	1	C25 -30
P21	25x40	1250.00	297.86	7.0	5.7	57	57	0	50	1	C25 -35
P22	25x40	1250.00	63.68	3.9	2.8	57	57	0	50	1	C25 -35

Nome	d	Quantidade
C25	25.00	28



DETALHAMENTO DAS ESTACAS ARMADAS

ESTACAS ESCAVADAS "IN LOCO" TIPO TRADO ROTATIVO
PARA 18 TONELADAS (26 X) - Profundidade média 0.80m - diam 25cm
Ou até atingir a rocha

Fck= 25.0 MPa Brita 1 e 2

ARMAÇÃO
26 X 6 A01 Ø10.0 C= 840m
B40

CORTE ESTACAS

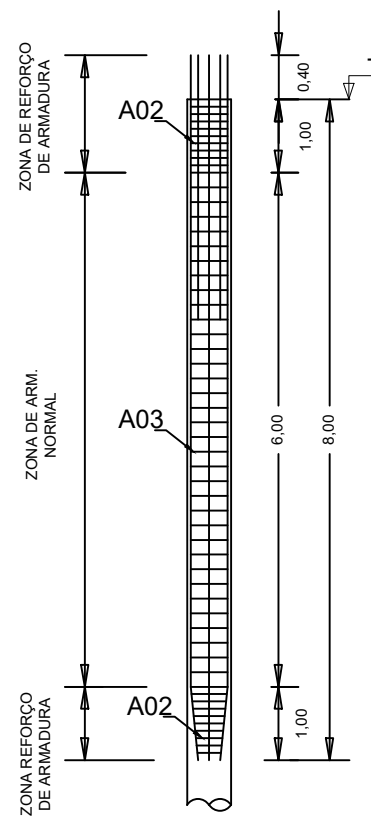
ZONA DE ARMADURA NORMAL

ESTRIBOS A02
26 X 20 A02 Ø 6.3mm
cada 0.10m C= 0.90m

ESTRIBOS A03
26 X 40 A03 Ø 6.3mm
cada 0.15m C= 0.90m

PESO TOTAL Ø10.0mm = 899.45 Kg
PESO TOTAL Ø 6.3mm = 383.01 Kg

CORTE ESTACAS

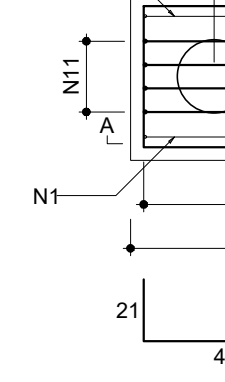


B5=B9=B15

2xC25

PLANTA

ESC 1:25

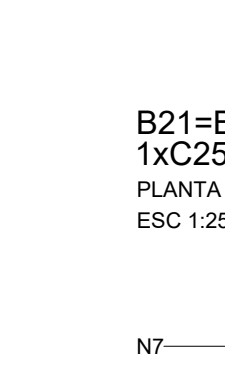


B21=B22

1xC25

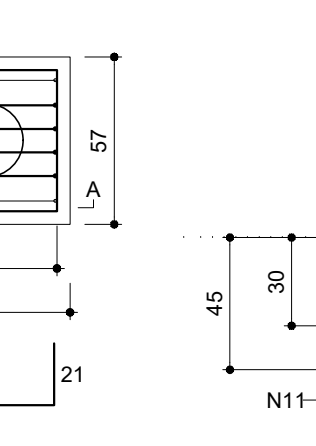
PLANTA

ESC 1:25



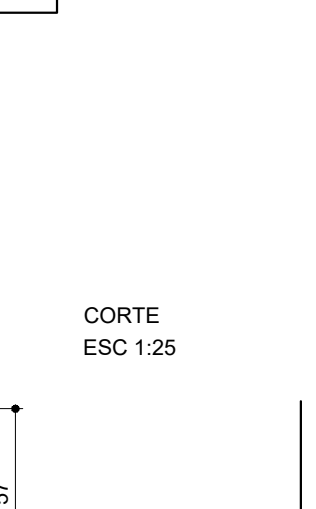
CORTE A-A

ESC 1:25



CORTE A-A

ESC 1:25

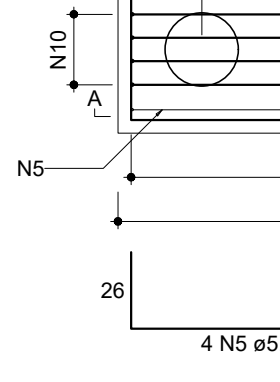


B1

2xC25

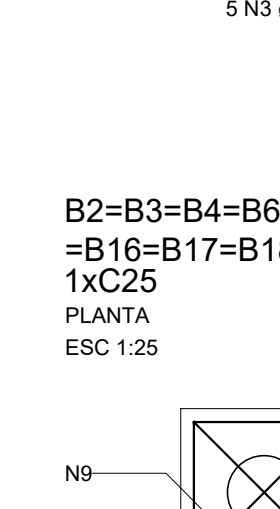
PLANTA

ESC 1:25



CORTE A-A

ESC 1:25



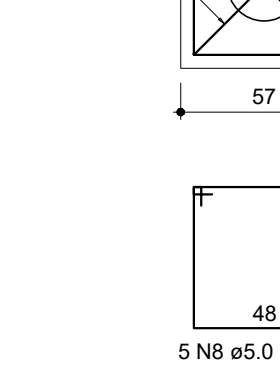
B2=B3=B4=B6=B7=B8=B10=B11=B12=B13=B14

=B16=B17=B18=B19=B20

1xC25

PLANTA

ESC 1:25



CORTE A-A

ESC 1:25



Relação do aço das Vigas

ACO	N	DIAI (mm)	QUANT	C.UNIT
CA60	1	5.0	345	122
	2	6.3	8	CORR
	3	6.3	16	CORR
	4	6.3	16	CORR
	5	6.3	8	CORR
	6	6.3	84	CORR
	7	6.3	16	CORR
	8	6.3	8	CORR
	9	8.0	1	146
	10	8.0	1	145
	11	8.0	3	119
	12	8.0	3	120
	13	8.0	1	129
	14	8.0	2	958
15	8.0	1	106	
16	8.0	2	316	
17	8.0	3	1167	
18	8.0	3	188	
19	8.0	1	169	
20	8.0	1	114	
21	8.0	1	154	
22	8.0	2	1131	
23	8.0	1	140	
24	8.0	1	118	
25	8.0	1	625	
26	8.0	2	884	
27	8.0	1	919	
28	8.0	3	1198	
29	8.0	3	899	